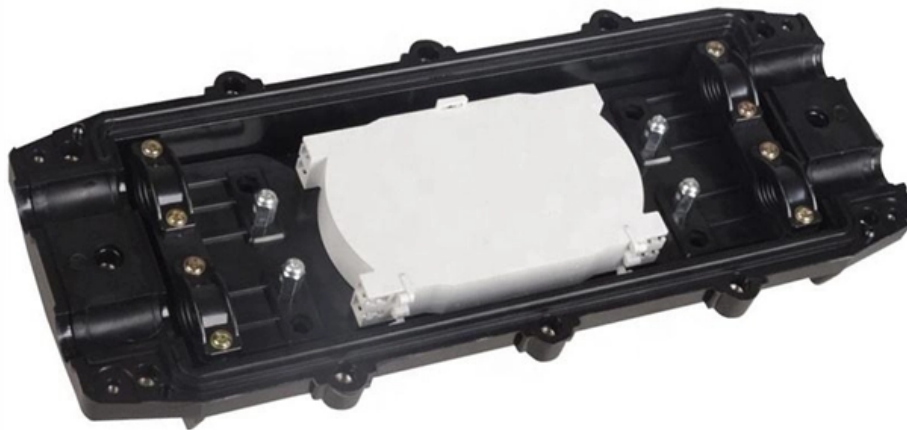


Where to buy a G 654 E high return loss adapter





Where to buy a G 654 E high return loss adapter

Novel ultra low loss & large effective area G.654.E fibre in

The paper introduced latest ITU-T G.654.E fiber specification and typical G.654.E profile design. Our novel ultra low loss & large effective area fiber attenuation and cabling performance were also

ZTO G654E Ultra Low Loss and Large Effective Area Fibre

G. 654 fiber is a single-mode fiber with a pure silica core, designed to minimize loss at a wavelength of 1550 nm. It was developed in the mid-1980s for long-distance



What Is G.654E Fiber? What Scenarios Is It Suitable For?

Relative to submarine use, terrestrial use of G.654 optical fiber macro-bend loss requirements are much more stringent (macro-bend loss and G.652D

G.654.E Bend-Insensitive Fiber

G.654.E Bend-Insensitive Fiber offers low loss and high performance for FTTH, FTTB, and FTTX networks. Ideal for indoor and outdoor use. Shop now for quality!, Alibaba

G.654.E optical fibers for high-data-rate terrestrial transmission

We examine here several aspects of G.654.E fiber in terrestrial systems including



modeled and experimentally measured transmission reach, the use of Raman amplification with pump

Novel Ultra Low Loss & Large Effective Area G.654.E Fibre in

Abstract: The paper introduced latest ITU-T G.654.E fiber sepecification and typical G.654.E profile design. Our novel ultra low loss & large effective area fiber attenuation and cabling performance

High Speed Long-Haul Optical Fiber Solution

G.654.E single-mode fiber is deemed as a promising candidate to optimize the transmission performance for next-generation ultra high-speed long



Ultra-low loss and large effective area G.654.E fiber in non-relay

In this paper, the properties of ultra-low loss and large effective area G.654.E fiber were studied, including the optical properties and cabling performance. Based on the tests of the transmission

Practical Aspects of G.654.E Fibers for Terrestrial Long Haul

We review G.654.E fibers with low loss and large A_{eff} for terrestrial long haul transmissions in particular emphasis on addressing practical issues on terrestrial cabling, low splice loss, and applicability of

G.654.E Optical Fiber: Low-Loss, Large Effective Area



Compared to standard G.652.D fiber, G.654.E offers superior bend resistance and lower chromatic dispersion, making it ideal for 400G/800G

G.654.E Ultra-Low-Loss Fiber for AI & DCI , Build

G.654.E is an ITU-T defined, ultra-low-loss, large-effective-area single-mode fiber specifically engineered for long-haul, ultra-long-haul, and high

High-Speed Long-Haul Optical Fiber Solution

G.654.E single-mode fiber is specifically designed to meet the requirements of long-haul transmission in high-capacity networks. In this comprehensive guide, we will provide an overview of



ITU-T G.654.E Fiber, PureAdvance for Terrestrial Long-Haul Networks

Growth of global data traffic demand is driving continuous requirements for higher capacity optical transmission systems. To support these high capacity systems in terrestrial backbone networks, low

G.654.E optical fibers for high-data-rate terrestrial transmission

The ITU-T gives the G.654.E definition as a new ultra-low-loss fiber with a large effective area capable of supporting high-speed transmission for terrestrial use.

Sumitomo Electric Completes Delivery of Terrestrial

Since 2017, Sumitomo Electric has been commercially supplying the low-loss, large Aeff pure-silica-core fiber PureAdvance™ -110 and optical fiber



G.654.E Fibre Cable

Compared to conventional fibres such as G.652.D or G.655, G.654.E supports significantly higher bit rates over longer distances. When combined with coherent optical transmission technologies and

GL FIBER® G.654.E Bend-Insensitive Fiber

G.654.E fibre is featured with larger effective area and lower attenuation than normal fibre, and more suitable for long-haul transmission with high capacity and speed rate.

High-Speed Long-Haul Optical Fiber Solution



As the demand for high-speed and long-haul optical communication continues to grow, the selection of the right fiber optic solution becomes crucial. G.654.E single-mode fiber is specifically

GL FIBER® G.654.E Bend-Insensitive Fiber

GL FIBER's FarBand® Ultra delivers both advantages in a single fiber, combining industry-leading low attenuation with an optimized large effective area for superior performance. G.654.E fibre is featured

G654.E Fiber Optic Cables

Huihong Technologies Limited is manufacturer of G654.E fiber cables for indoor and outdoor applications. G.654.E fiber optics combine ultra-low loss and large



G.654.E Fibre Cable

G.654.E fibre: a high-performance, sustainable networking solution. Digital technologies are estimated to account for approximately 2-3% of global carbon emissions - a figure that is steadily rising.

G654.E Ultra-Low Loss Large Effective Area Optical Fiber

The G.654.E is a single-mode optical fiber with the larger effective area engineered specifically for ultra-long-haul and submarine networks.

Contact Us

For datasheets, pricing, or custom optical networking solutions, please visit:
<https://entrenamientointeligente.es>