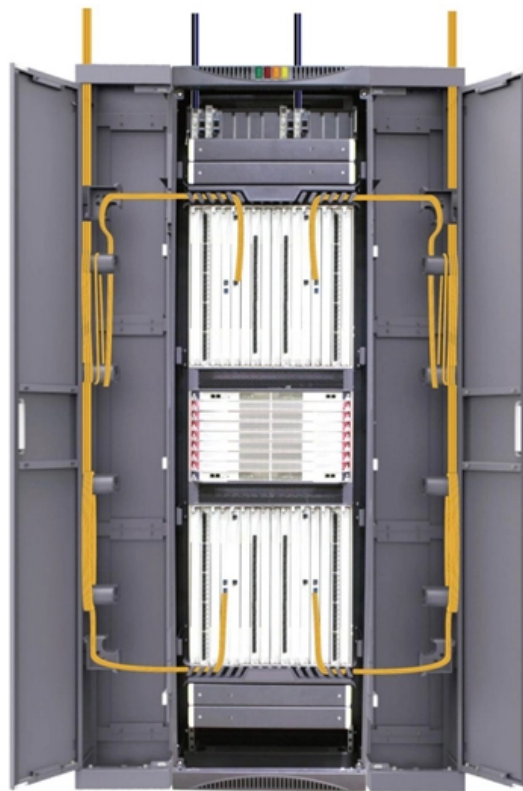


# **What are the required certificates for relay protection operation**





## What are the required certificates for relay protection operation

---

### Basic protection relay knowledge

---

Protection is needed to detect electrical faults and abnormal operating conditions. Protection is also needed for protecting people and property around the power network. The protected zone is the part

### Professional Certificate in Power System Protection

---

Obtaining a Professional Certificate in Power System Protection is essential for individuals working in the electrical engineering industry. This certification provides specialized knowledge and skills required



## Protection Relay Testing and Commissioning

---

PROTECTION RELAY TESTING AND COMMISSIONING The testing and verification of protection devices and arrangements introduces a number of issues. This happens because the main function

## Protective relay maintenance training , AVO Training

---

This course is intended for technicians and engineers responsible for the testing and calibration of protective relays, reclosers, and other protective systems.

## Protective Relay , Fundamental Requirements of

---

A Protective Relay is a device that detects the fault and initiates the operation of the circuit breaker to isolate the defective element from the rest of the system.



## **Introduction to Protective Relaying , Electric Power**

---

Introduction to Protective Relaying What are Protective Relays, or Protection Relays?  
Protective relays are used in industrial power generation and supply

## **Power System Protective Relays: Principles & Practices**

---

Protective relays and devices have been developed over 100 years ago to provide "lastline"of defense for the electrical systems. They are intended to quickly identify a fault and isolate it so the balance of

## **Electrical relay protection and coordination training**

---



This training is designed for electrical engineers, system operators, and protection specialists seeking to enhance their skills in designing and implementing effective protection systems.

## **Protection Relay Types and Testing Procedures**

---

Introduction In modern electrical systems, protection relays are critical for ensuring safe and efficient operations. These devices safeguard assets

## **Protective Relay Maintenance and Testing , Electronic**

---

The experienced relay technicians of Vertiv(TM) understand the critical nature of working with an active protection scheme and the impact testing and



# **IEEE Guide for Protective Relay Applications to Transmission Lines**

---

This document is a revision of IEEE Std C37.113-1999 . This guide is intended to assist protection engineers and technologists in effectively applying relays and protection systems to protect

## **Relay Maintenance and Testing**

---

Relay Maintenance and Testing Periodic maintenance and testing is necessary to ensure your protection scheme continues to provide satisfactory performance for many years after installation.

## **INSTALLATION AND MAINTENANCE GUIDELINE FOR PROTECTIVE RELAY**

---



Section 11.4 of the WECC Minimum Operating Reliability Criteria stipulates that "Each system shall provide for periodic testing of protective relay systems and remedial action schemes which impact

## **Electrical relay protection and coordination training**

---

Electrical relay protection and coordination are essential for the reliable and safe operation of electrical power systems. Effective protection schemes and precise coordination are crucial for minimizing

## **Fundamentals of Relay Protection Design**

---

Relay protection is a crucial aspect of electrical power network transmission and distribution systems, ensuring the safety and reliability of the overall network. Designing an effective



## **By law, protective relay calibration is required once**

---

Why is protective relay testing important? When they are required to operate because of a faulted or undesirable condition, it is imperative that protective

## **Testing and Maintenance of Protective Relays**

---

Unlike the rotating machines or other equipment, the protective relays remain standstill and without operation until a fault develops. However, the relay should be vigilant at all times. For reliable service

## **The basics of power system protection that every**

---

Introduction to relay protection Protection is the branch of electric power engineering concerned with the principles of design and operation of



## **Protection Relay Application Training Course , PetroKnowledge**

---

Although the primary role of protective relays is to perform protection functions, relays also provide additional data and some control functions. The Protection Relay Application training course is

## **Practical handbook for relay protection engineers , EEP**

---

It ensures that the protection relays used in the system will at least have performed all the tests required in the standard and will also be covered by



## **Types of Protection Relays and Testing procedures**

---

Regular testing and maintenance of protection relays are essential to verify their proper operation, detect faults, and mitigate risks. By conducting

## **Installing and Maintaining Protective Relay Systems**

---

Introduction Relay systems protect high-voltage equipment and transmission lines to ensure safe, stable systems. Although failure of a protective relay system may have severe local or regional impacts,

## **Protective Relay Training - Basic Power System Protection**

---

Protective relay training offers an overview of power system protection, relay schemes, digital and electromechanical relays, fault detection, coordination &



## **Protective relay maintenance training , AVO Training**

---

Proper maintenance of protective relays is fundamental to the operational integrity and safety of any power system. Our hands-on training courses are designed to

## **IEC Standards for Protection Relays**

---

Protection relays are major players in electrical power networks, safeguarding systems from faults and ensuring seamless operations. The International Electrotechnical Commission (IEC)

## **Protective Relay Basics**

---



Traditionally, protective relays were electromechanical devices utilizing induction disk, coils, contacts, and solenoid elements to determine protective characteristics.

## Certification Bodies for Relay Protection

---

After extensive testing and assessment, the certification body awards the necessary compliance certificates to the relay protection devices that pass all requirements.

## Protective relay

---

In electrical engineering, a protective relay is a relay device designed to trip a circuit breaker when a fault is detected. : 4 The first protective relays were

## Contact Us

---

For datasheets, pricing, or custom optical networking solutions, please visit:



<https://entrenamientointeligente.es>