



EIT Opto-Routing

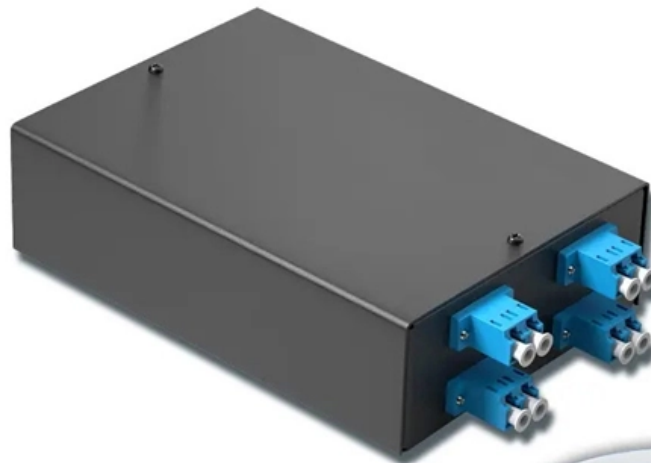
UT277FC Interface

4-port 8-core LC wall-mounted fiber terminal box (empty frame) |

Surface painted

Scientific plate fiber

Cold-rolled steel plate



Lifetime quality assurance

Free shipping

Customizable for telecommunications





Overview

The UT-277 is a multi-functional fiber optic modem that supports asynchronous RS-232, RS-485 and RS-422 communication interfaces and is ideal for connecting a RTU to a host or a distributed data acquisition system (SCADA) controller. UT-277 SM Converter FC ST SC Interface RS232/422/485 Singlemode Fiber Optic Transceiver Below you will find brief information for UT-277 Fiber Modem. It is the best choice to connect remote terminal unit (RTU) with HOST or SCADA controller. It supports RS-232/485/422 asynchronous protocols; it can be mixed and matched to use 2 RS-232, RS-485 or RS-422 ports, and it.



UT277FC Interface

Communication Interface of The Embedded Systems , PPT

13. e) Parallel Interface: o The on-board parallel interface is used for communicating with peripheral devices which are memory mapped to the host of the system o

Understanding Sensor Interfaces

We hope this guide has been useful for you to get started with four interface methodologies that drive much of the world of IoT: UART, I2C, SPI, and



List of interface bit rates

This is a list of interface bit rates, a measure of information transfer rates, or digital bandwidth capacity, at which digital interfaces in a computer or network can communicate over various kinds of buses

[OpenWrt Wiki] Use SSH to connect to the internet and install LuCI

Use SSH to connect to the internet and install LuCI web interface The following instructions give the OpenWrt device an IP address in the same network of the ISP modem, then set

Interfaces

Interfaces Addressable interfaces are designed to connect other detection equipment such as sprinklers, door release and shutters to the fire alarm system. Interfaces are cleverly designed and very easy-to



SPI vs. I2C vs. UART: Differences Between These

Best Communication Interfaces among SPI, I2C, and UART What is a Serial Peripheral Interface (SPI)? Serial Peripheral Interface (SPI) is one of the serial

UT-277R

It supports multiple asynchronism communication protocols including RS-232, RS-485 and RS-422, and it also supports a combination of two of the RS-232, RS-485 or RS-422 interfaces as well as both of

2PCS UOTEK RS232 RS485 RS422 to Fiber Optic



UT-277SM fiber optic modems support asynchronous RS-232/485/422 communication. It is the best choice to connect remote terminal unit (RTU) with

Interface an I2C LCD with Arduino

Learn to control I2C LCD with Arduino along with pinout, wiring, finding I2C address, adjusting contrast, arduino code, create and display custom

PCB Interfaces and Communication Protocols , Sierra

PCB interfaces are categorized into wired interfaces, like UART, I2C, and PCIe, and wireless interfaces, such as 5G, Wi-Fi, and LoRa.



Host controller interface (USB, Firewire)

A USB and Firewire Host Controller Interface (UFHC) is a register-level interface that enables a host controller for USB or IEEE 1394 hardware to communicate with a host controller driver in software.

AVR Microcontroller Programming Interfaces Explained

AVR Microcontroller Programming Interfaces Explained, covering ISP, JTAG, TPI, UPDI and ATmega PDI methods including recommended pin-outs.

UOTEK UT-277 Series RS-232/485/422 Fiber Optic MODEM



Supports point-to-point (point-to-multipoint) connection Supports RS-232, RS-422, RS-485 protocol RS-232, RS-485/422 working at the same time Supports 2 bits (half-duplex) & 4 bits (full-duplex) RS485

A Quick Guide to Communication Protocols

Discover key insights on selecting hardware communication protocols, including UART, USB, Ethernet, CAN, and more, to make the best decision for your products.

TXD: indicating data sending from fiber interface. High-Speed RS

Electric interfaces: RS-232: pole-shaped connector. S-485/422: pole-shaped connector
Fiber interface: ST interface (other interface can be ordered SC/FC) RS-232 interface features:
Standard RS-232 three



TXD: indicating data sending from fiber interface. High-Speed

Being a multi-function fiber modem in support of asynchronism RS-232, RS-485 and RS-422 communication interface, UT-277 is the best choice for the connection from remote terminal unit (R

USB Interface II

Das USB-II Interface ist ein CAT und Soundkarten-Interface. Damit ist das Gerät ideal für alle Anwender geeignet die damit digitale Betriebsarten über die

QR/ZXLW 04



The UT-277 is a multi-functional fiber optic modem that supports asynchronous RS-232, RS-485 and RS-422 communication interfaces and is ideal for connecting a RTU to a host or a

Interfaces and their protocol stacks

Jan 8, 2012 Interfaces and their protocol stacks After familiarising with main network elements, time has come to better know interfaces between those elements.

UTEK UT-277 Fiber Modem User Manual , AI Chat & PDF , Manualzz

What type of fiber connection does the UT-277 use? The UT-277 uses ST interfaces for fiber connection. SC/FC interfaces can also be ordered.



wifi

However, What are the different internet connection types used by ifconfig and ipconfig? and Unexpected interfaces in ifconfig have cleared a lot of this up for

Cisco Show Interface Command on Routers and

One of the most useful and popular commands used on Cisco devices is the "show interface" command. It can be very useful at troubleshooting connectivity issues

Intesis(TM) AC Interfaces , Controls , Samsung HVAC

Samsung HVAC's Intesis(TM) AC interfaces allow bidirectional control and monitoring of compatible Samsung systems including a BMS, SCADA or PLC.



Interface

Interface engineers around the world are empowered to create high-level tools and solutions that deliver consistent, high quality performance. These products include load cells, torque transducers, multi

UART vs I2C vs SPI - Communication Protocols and Uses

When we're talking communication protocols, a UART, SPI and I2C are the common hardware interfaces people use in microcontroller development.

An Introduction to the UART, SPI, and I2C



Communication protocols such as UART, SPI, and I2C provide an essential function in embedded systems. They function as an interface between a

UOTEK UT-277

It is the best choice to connect remote terminal unit (RTU) with HOST or SCADA controller. It supports RS-232/485/422 asynchronous protocols; it can be mixed

UT-277

Being a multi-function fiber modem in support of asynchronism RS-232, RS-485 and RS-422 communication interface, UT-277 is the best choice for the connection from remote terminal unit

Contact Us



For datasheets, pricing, or custom optical networking solutions, please visit:
<https://entrenamientointeligente.es>