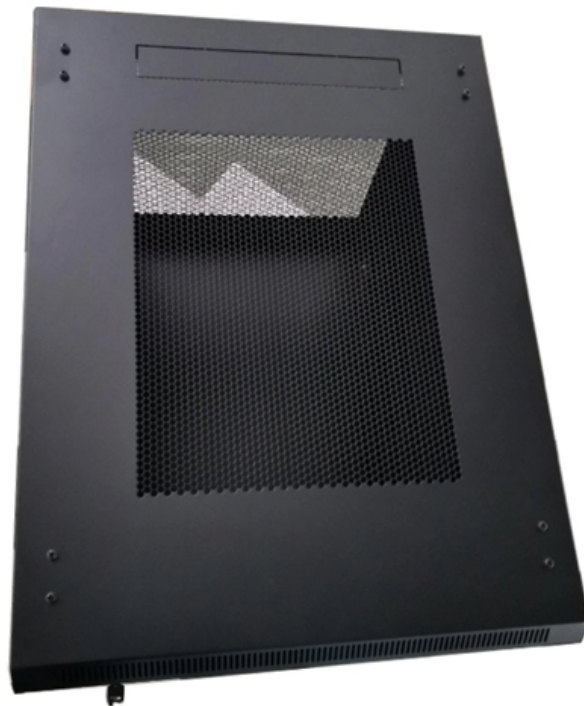


Lc tray-type beam splitter





Lc tray-type beam splitter

FHD® Cassette PLC Splitter Data Sheet , FS

FS FHD® Cassette Splitters are engineered for high-density networks, offering exceptional scalability and reliability. FS PLC splitters come in a full range of 1xN and 2xN models, with a variety of

How does a beam splitter work? Common types and use cases

To fully understand how beam splitters work, it is important to delve into their operational principles, common types, and the numerous use cases where they find application.



How Beamsplitters Work: Types, Mechanisms, and

This article explains the working principles of beamsplitters, detailing how they divide a beam of light into two separate paths, the different types of

PLC Optical Splitter Types

According to different packaging methods, PLC optical splitters can be divided into bare fiber type, micro (steel tube/module), with fanout type, ABS box

Beam splitter Optical Lens Supplier , VY Optoelectronics

VY Optics beam splitters feature meticulously engineered optical surfaces to ensure accurate light splitting. Our optical designs minimize optical distortions and maximize



light distribution efficiency,

Exploring Beam Splitters: Types and Applications

What Is a Beam Splitter? Working Principles, Types, and Applications
Beam splitters play a critical role in modern optical technology, powering devices from teleprompters and holographic displays to fiber

Beam Splitters , Polarizing , Dichroic , LightMachinery

LightMachinery's range of beam splitters includes polarizing and dichroic. We make custom beam splitters to fit your unique specifications. [Learn more!](#)



What Are Optical Beamsplitters? , Plate, Cube & Dichroic Types

Technical guide on what are optical beamsplitters. Compare plate, cube, and dichroic types for laser, imaging, and sensing applications.

Tray Type PLC Splitter - 1×N Plug-and-Play Distribution

1×N tray-type PLC splitter designed for fast installation inside closures, ODFs, and wall boxes. Ideal for FTTH and MDU optical distribution

Beam-splitter

Beam-splitter Beamsplitters are used to split or combine beams of light. Plates are used for most laser applications as they exhibit low absorption. Cubes are a convenient, protected form for low power



High Power Beam Splitters with Dielectric Coatings

The beam splitter can be designed for one wavelength with reflectivity at s-pol and for the other wavelength at p-pol. This is especially useful when working with frequency doubled beams, as the

PLC-S-116 1x16 Steel tube fiber optic PLC Splitter

The 1x16 Steel tube PLC Splitter devices have high performance, over a wide wavelength range from 1260nm to 1650nm, and work in temperatures from -40°C

Beam Splitter , Precision, Applications & Design Principles



Explore the precision, applications, and design principles of beam splitters, essential for advancements in scientific research and technology.

Tray Type PLC Splitter , Fiber Optic Communication

Tray Type PLC Splitter can accommodate a variety of PLC Splitter with various types of connectors: SC/PC, SC/APC, FC/PC, FC/APC, ST/PC, ST/APC, LC/PC,

Fiber Panels, Modules & Cassettes

Explore CommScope's efficient and scalable fiber splice panels designed for seamless connectivity. Accommodating LC, SC, and MTP/MPO connectors,



The Buyer's Guide to Beam Splitters , Blue Ridge Optics

Beam splitters are the unsung heroes of the optics world. These optical components divide incident light into two distinct beams: one reflected and one transmitted. This precise ability to

What are Beamsplitters?

Options range from laser beam combiners designed for specific laser wavelengths to broadband hot and cold mirrors for splitting visible and infrared light. This type of

Precision Beamsplitters & Quad-Channel Imaging

Our selection includes plate and cube designs, offering polarizing, non-polarizing, and dichroic options. All our custom beam splitters are made from premium glass,



Different Package Type PLC Splitters

Different types of PLC splitters are designed to meet the different needs of OLT and ONT connection and splitting of optical signals in FTTH passive optical

2x8 SC Simplex Fiber Optic PLC Splitter Tray

Why Choose Fibconet 2x8 Fiber PLC Splitter Tray Efficient signal distribution with an even split ratio using PLC technology Pre-installed input and output fibers for easy integration into fiber distribution

PLC Splitter, Fiber Splitters, Always Ready for PON



FSPLCFiberOpticSplitters, Bare/Blockless/ABS/LGXSplitter/RackMountTypes, support 1xN light distribution, with low IL and PDL for high-reliability transmission.

Beamsplitters: A Guide for Designers , Optics

These are rugged beamsplitters that are easy to mount and are ideal for beam superposition applications. This type of beamsplitter deforms much less when

Beam Splitters - optical power splitter, beamsplitter, thin

Beam splitters are devices for splitting a laser beam into two or more beams. There are different types, including polarizing and non-polarizing versions.



How does a beam splitter work? Common types and use cases

Understanding Beam Splitters Beam splitters are essential optical components used to divide a beam of light into two or more separate beams. They play a crucial role in various scientific,

Beam Splitters, Separators & Combiners , Other Items

In addition to standardized, stocked separators, we primarily develop and produce unusual beam splitters, which are created, for example, by joining structured

High Power Beam Splitters with Dielectric Coatings



High Power Beam Splitter with a Dielectric Coating Description Beam splitters are used for separation of one wavelength into two beams with different or same energy. This can be done by beam splitter

DTS0095

Both 1XN and 2XN splitters can be constructed in this fashion with as many as eight or more outputs, with both low return losses and low insertion losses. This design is extremely flexible, allowing one to

Contact Us

For datasheets, pricing, or custom optical networking solutions, please visit:
<https://entrenamientointeligente.es>