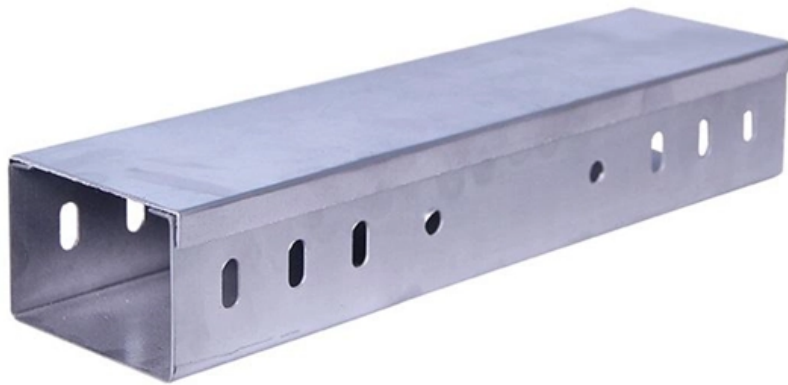




**EIT Opto-Routing**

# **Installation Plan for Core Switches**





## Installation Plan for Core Switches

---

### Core switch replacement

---

I used an Aggregation switch, not as a core, but as a stand-alone for iSCSI traffic. It was purchased as a temporary switch because of equipment that required 10G connections prior to my

### Core Switch swap-out

---

I will be swapping out an old core switch, 3750 G for a new one a 3850 G. The Team Lead want's me to put together a Project Management document outlining everything that will be done,



## Core switch replacement

---

My current core switches (2 x Aruba 3810M) are 6 years old and limited in their connection options. Adding in SFP+ modules will not give me enough connections for the servers,

## Introduction to Core Switch Configuration

---

A switch that functions as part of a router and operates at the third layer of the OSI network standard model, the network layer. The most important purpose of the layer 3 switch is to speed up the data

## EIM Session Plan: Wiring Installation Skills

---

This document provides a session plan for a unit of competency on installing wiring devices for floor and wall mounted outlets, lighting fixtures, switches, and auxiliary outlets. The session plan includes 25



## How to plan for a campus core switch refresh: Basic requirements

---

Growing traffic demands are putting more pressure on campus core Ethernet switches. Here in the first part of this series, we examine the steps needed to plan for a core switch upgrade.

## Installing and Configuring Network Switches

---

Comprehensive Guide for IT Systems Field Technicians: Installing and Configuring Network Switches In today's fast-paced digital world, effective IT system installation and disposal are critical for



## **SME Network Solution Typical Configuration Examples**

---

"Gateway (AR720) + Core Switch + Access Switch + AP + AR180" Networking: Huawei eKit Cloud Management "Gateway + Core Switch + Access Switch + WAC + AP" Networking: Local Entire

## **Prepare Switches , Validated Solution Guide**

---

Prepare switches for deployment in Aruba Central for building a Two-Tier Data Center. The L2 Two-Tier Data Center uses an MC-LAG core for

## **The Ultimate Guide to Network Switch Installation Do's**

---

The Ultimate Guide to Network Switch Installation Do's and Don'ts provides essential information for a successful installation, including choosing the



## Core Switch vs. Distribution Switch vs. Access Switch

---

Core Switch vs. Distribution Switch vs. Access Switch: Understand Their Roles in Ethernet Networks Ethernet networks are growing and becoming more complex,

## Understanding Core Switch: What It Is and How to

---

In the realm of system networking, three key types of switches are frequently mentioned: access switches, aggregation switches, and core switches.

## install-guide

---



**WARNING:** Installation and removal of the unit must be carried out by qualified personnel only. **WARNING:** When connecting this device to a power outlet, connect the field ground lead on the tri

## **Network Installation & Configuration: The Ultimate Guide**

---

Wired network installation creates a robust, secure, and stable digital ecosystem for businesses large and small. [Click to learn more!](#)

## **Switch Installation**

---

Switch Installation For initial switch setup, assigning the switch IP address, and powering on information, see the [switch getting started guide on Cisco](#) .



## How to plan for a campus core switch refresh: Basic requirements

---

Big campus core switch refreshes typically occur every 5 to 10 years, or longer, depending on the switch. When evaluating switches, factor in future requirements.

## Switch Installation

---

Switch Installation This chapter describes how to install and connect a Catalyst 3650 switch. It also includes planning and cabling considerations for stacking switches.

## LAN design

---

How would I use them as core switches? I was hoping someone could point me in the



right direction on the best way to connect the switches up, i.e. network design, cabling (fibre uplinks)

## **How to install a dormakaba Switch(TM) Core**

---

Get the full official dormakaba Switch(TM) Core installation instructions by downloading the free BILT app and searching "Switch Core." Install it right the first time using the BILT 3D interactive

## **8 Steps to Configure Your Network Switch**

---

Learn how to setup a network switch with ease. Switches allow you to send and receive information efficiently and securely. Get setup today!



## Replacing one core switch with two new core switches

---

I will have to replace our old core Cisco switch C4506-E with two new core switches C9500 that will be located in two different server rooms. Currently there is one server room and our

## SME Network Solution Typical Configuration Examples

---

"Gateway + Core Switch + Aggregation Switch + Access Switch + WAC + AP"  
Networking: Local Entire Network Deployment (EasyWeb) "Gateway + Core Switch + Aggregation Switch + Access Switch +

## Prepare Switches , Validated Solution Guide

---

Review the Installation Guide before installing and deploying the switches. Carefully



review requirements for power, cooling, and mounting to

## Core Switch Change

---

Hi all. We will be swapping our existing core switch for a new one and I want to get some verification that the procedure I have in mind is a good one to take. We currently have the following

## [serenalindquist99/server-core-switch-lab](#)

---

? Server/Core Switch Replacement Lab This lab simulates a real-world enterprise network upgrade involving the replacement and configuration of core switches, port migration, ACL deployment, and



## Colombia CORE Switch Refresh Plan

---

The project aims to upgrade to new switch models to meet network needs, ensure support, and allow for future software updates. Key deliverables include a testing

## Introduction to Core Switch Configuration

---

Switches should be able to achieve wire-speed switching, which is the rate at which data is transferred on a transmission line, to minimize switching bottlenecks.

## Colombia CORE Switch Refresh Plan

---

This project management plan outlines the scope, objectives, assumptions, constraints, deliverables, planning, budget, organization, risk management,



# Supply, Installation, and Configuration of Core Switch

---

Supply, Installation, and Configuration of Core Switch 1. TECHNICAL REQUIREMENT AND SCOPE OF WORKS Planning Review the existing network infrastructure and topology. Determine the required

## Contact Us

---

For datasheets, pricing, or custom optical networking solutions, please visit:  
<https://entrenamientointeligente.es>