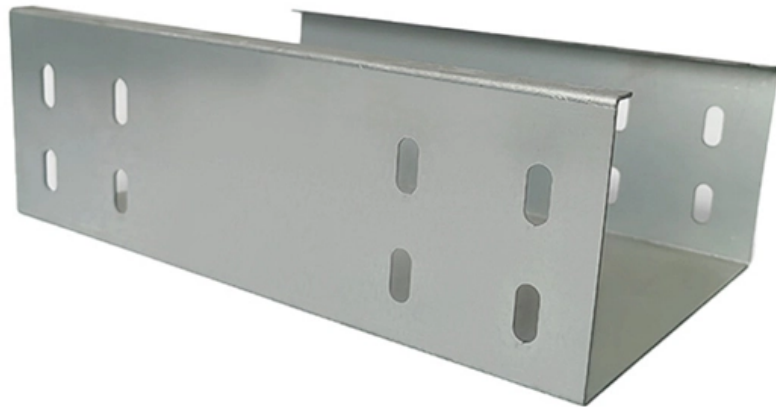


Huawei S9303 Core Aggregation Switch





Overview

The Huawei S9303 is a Layer 3 application-level Ethernet aggregation switch with a backplane bandwidth of 1228 Gbps and three service slots. The forwarding performance is good, reaching 540MPPS, and the switching capacity is 720G. When the chassis has no cable management frame installed, the dimensions (H x W x D) are 175 mm x 442 mm x 517. It offers enhanced scalability, flexibility, and reliability, tailored for modern network infrastructures. Huawei S9300 Series Switch S9303 support 2*Main Control Units (MCUs), 3* Line Processing Units (LPUs), and AC or DC power modules in 1+1 backup mode Huawei S9300 Series Switch S9303 support 3 LPU slots, 2 MCU slots, 2 system power supply slots, and 1 PoE power supply slot The S9303 chassis is 4 U. Product description: The HUAWEI S9300&S9300E&S9300X series switches come in the following models: S9303, S9306, S9310, S9312 and S9303E, S9306E, and S9312E. The S9303/S9303E, S9306/S9306E, S9310, and S9312/S9312E support We hold a large amount of HUAWEI S9300 series items in stock.



Huawei S9303 Core Aggregation Switch

Quidway S9300 Series Terabit Routing Switch

The S9300 has three models: S9303, S9306, and S9312. Their switching capacity and port density can be expanded continuously. The three models use universal modules and components. This not only

Standalone AC Solution: Aggregation Switches Function as Gateways

Core switches set up a CSS that functions as the core of the entire campus network to implement high network reliability and forwarding of a large amount of data. Aggregation switches set up stacks to



Thunder-link

Thunder-link - Huawei S6730-H series 10GE switches are next-generation enterprise-class core and aggregation switches that provide 10GE downlink optical ports and 100GE

Huawei Enterprise S9300 Series Terabit Routing Switches

Product Overview The S9300 series switches (S9300s) are next-generation high-end terabit routing switches, developed by Huawei and designed for multiservice convergence. The S9300 design is

Huawei Switch s9303 , PDF , I Pv6 , Computer Network



Huawei Switch s9303 - Free download as PDF File (.pdf), Text File (.txt) or read online for free. Huawei's S9300 series switches are next-generation high-end

S9303

The S9303 chassis provides 3 LPU slots, 2 MCU slots, 2 system power supply slots, and 1 PoE power supply slot. Figure 4-6 shows the layout of slots at the front of the S9303 chassis, and Figure 4-7

Huawei Switch S9303

Product Appearance The S9300 is available in three models: S9303, S9306, and S9312. The switching capacity and port density of all three models is expandable. Each model offers a modular design with



S9300 Series Terabit Routing Switches

Product Overview The S9300 series switches (S9300 for short) are next-generation high-end terabit routing switches, developed by Huawei and designed for multiservice convergence. The S9300

S9303, S9306, S9312, AND S9300E SERIES SWITCHES QUICK

Switches delivered to North America use ground cables with two-hole OT terminals, and switches delivered to other regions use ground cables with one-hole OT terminals.

Link Aggregation Configuration

Example for Configuring Link Aggregation in Manual Mode When Switches Are Directly Connected Overview Ethernet link aggregation increases link bandwidth by bundling



multiple physical links to

Huawei S9300E Switch Product Brochures

The S9300E switches function as high-density 10G core and aggregation nodes in large-scale data centers, helping enterprises build highly reliable, non-blocking, and virtualized data center networks.

Huawei Switch s9303 , PDF , I Pv6 , Computer Network

Huawei's S9300 series switches are next-generation high-end terabit routing switches. The S9300 design is based on Huawei's intelligent multilayer switching



Huawei S9303 Switch Delivers Outstanding Performance

The Huawei S9303 is a Layer 3 application-level Ethernet aggregation switch with a backplane bandwidth of 1228 Gbps and three service

Installing S9303 and S9303E Chassis

If a fully configured chassis is delivered, remove cards and power modules before the installation. Install them after the chassis is installed. Keep the tweezers delivered with the switch for future use.

HUAWEI S9303,S9306,S9310,S9310

The S9300& S9300E& S9300X series switches come in the following models: S9303, S9306, S9310, S9312 and S9303E, S9306E, and S9312E. The S9303/S9303E,



S9303E

The S9303E series switches support two redundancy modes of power modules: N+N, and N+0. The value of N depends on the maximum power actually required by the system.

Huawei LE0KS9303 S9303 Switch Chassis 3-Slot Modular Frame

Deploy Huawei S9303 for scalable core switching with 3-slot modular LE0KS9303 chassis, no fan & PSU for flexible configuration. Order now.

Link Aggregation



Both devices of an Eth-Trunk must use the same link aggregation mode. Before deleting an Eth-Trunk, delete member interfaces from the Eth-Trunk. On member interfaces, some commands (for example,

Quidway S9300 Terabit Routing Switches

Product Overview Quidway® S9300 switches (S9300 for short) are next-generation high-end terabit routing switches developed by

Configuring Link Aggregation in LACP Mode

S9300 and S9300EV200R008 (C00&C10) Configuration Guide - Ethernet Switching This document describes the configuration of Ethernet services, including configuring link aggregation,



Huawei S9300 Switch Product Brochures

The S9300 switches function as high-density 10G core and aggregation nodes in large-scaledatacenters, helpingenterprisesbuildhighlyreliable, non-blocking, andvirtualized data center networks.

S9303

The S9303 has one fan module respectively, located at the rear of the chassis. It absorbs cold air into the chassis to dissipate heat generated by working components, ensuring that the chassis operates

Contact Us

For datasheets, pricing, or custom optical networking solutions, please visit:
<https://entrenamientointeligente.es>