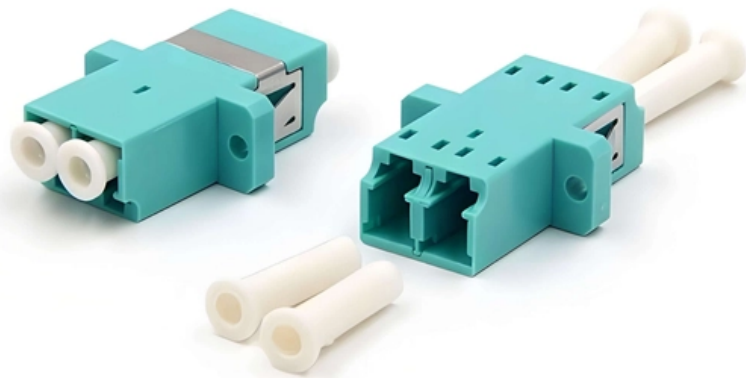


# Huawei Network Rack Cabling





## Huawei Network Rack Cabling

---

# Huawei SmartAX MA5800-X15 Quick Installation Manual

---

View and Download Huawei SmartAX MA5800-X15 quick installation manual online. SmartAX MA5800-X15 network hardware pdf manual download.

## Huawei 19 Inch Rack Guide: How to Choose the Right One

---

A practical, no-fluff guide to selecting a Huawei 19 inch rack--covering dimensions, certifications, compatibility, and real-world trade-offs for telecom, datacenter, and edge deployments.



## Standard IT Cabinet

---

A Huawei cabinet complies with the International Electrotechnical Commission (IEC) 60297-1 standard and is an assembled cabinet for ease of expansion. The distance between its front and rear

## Learn Network Cable Management for Home Racks

---

In this video I build a network rack from scratch, explaining along the way the each step and the reason I am doing it the way that I am. This is intended for a home network, not a commercial

## Huawei N63E-22 Rack 21" cabinet 47U

---

The power cables and subscriber cables are led into the N63E-22 cabinet from the top or



bottom of the cabinet. The cables of the N63E-22 cabinet can be routed in the overhead cabling mode or the

## **Cable Connections to the Power Supply and Distribution System**

---

If the cable length needs to be adjusted, adjust the cable to a proper length based on the actual position of the power distribution module, crimp the terminal, and then connect the cable. Crimp a cord end

## **Checking the Cabinet or Rack**

---

Cabling in the cabinet Record the cross-sectional area of the cabling channels on both sides of the device. Check whether the cross-sectional area meets the requirements for routing network cables



## **Network & Server Rack Setup Best Practices**

---

Learn network & server rack setup best practices. Get tips for how to setup a server or network rack, how to layout your equipment, & enhance your

## **Structured Cabling in IT Racks: An Essential Art in 2025**

---

Discover the structured cabling essentials for IT racks in 2025. Learn installation, benefits, and best practices for optimal network performance.

## **Effective Racking and Cable Management , Kudox**

---

Effective racking and cable management are crucial components of any well-organized IT infrastructure. They ensure efficient cable handling and



## Scenario: Cabinet/Rack Mounting

---

Cabinet/Rack Mounting: Using Front Mounting Brackets or Cable Management Frames and Rear Mounting Brackets Context This installation method applies to S5710-HI switches. Follow these

## Installing Cable Racks and Mounting Ears

---

HUAWEI AntiDDoS8000 V500R005 Hardware Description Installing Cable Racks and Mounting Ears Mounting ears are used to fix a device to the cabinet, and cable racks are used to

## Huawei DP0B02RACK00 A66e Network Rack



## 2200x600x650mm

---

The Huawei DP0B02RACK00 is a high-quality A66e cabinet designed to meet the demands of modern ICT infrastructure. This robust cabinet, with dimensions of 2200mm in height, 600mm in width, and

## Huawei NetHos Cabinet Brochure , PDF

---

Accessories 04 Cable Management Accessories Horizontal Cable Rack: The rack provides horizontal cable management and is usually installed in the back of the

## Network Cable Management And Installation For A Office Setup

---

office network setup and 22 u rack installation and cable management dahua 24 port switch Aruba 48 port switch mini pro patch panel plink 48 port switch 24



## **How To Wire a Server and Network Rack , Tips & Best**

---

Best practices for network rack and server rack cabling If improving network reliability and performance are important to you (and you would not be

### **Scenario 1: Installing a Device in a Cabinet or Rack**

---

When mounting the device in a cabinet or rack using mounting brackets, ensure that the mounting brackets are aligned horizontally on the left and right mounting rails. If the mounting brackets are not

### **Huawei N63E Rack 2200x600x300mm Assemble , Router-switch**

---



What accessories are available for the N63E Assemble Rack? Accessories for the N63E Rack include additional shelves, cable management arms, and cooling solutions, which enhance its functionality

## **Create a rack diagram with the best FREE Network**

---

After successfully creating your network rack, it's time to share your server rack plan with your colleagues and print it. With our Server Rack Diagram Template, you

## **Equipment Layout in the Network Cabinet**

---

Relocate the cable manager in the rear door position as high as the device to be installed. Use an insulated flat-head screwdriver to insert floating nuts into the device mounting holes in the rack rails



## Excel Environ Racks

---

Excel Encyclopaedia Further information about Excel's Environ Racks can be found online in the Excel Encyclopaedia. The Excel Encyclopaedia is a comprehensive

## Installing a UPS (Rack-Mounted Scenario)

---

3.2.1 Installing a UPS (Rack-Mounted Scenario) Context This section describes the rack-mounted installation for one 6 kVA UPS and two lithium batteries. The actual cabling may vary.

## Network Server Racks - Primus Cable

---

Racks are a lucrative method of keeping all networking components contained and organized within a central area, especially when floor space is limited. Simplify



management and expedite the

## Contact Us

---

For datasheets, pricing, or custom optical networking solutions, please visit:  
<https://entrenamientointeligente.es>