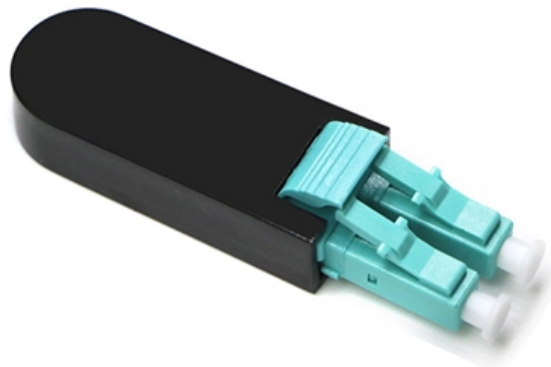


Huawei 10 Gigabit Optical Module 1310nm





Huawei 10 Gigabit Optical Module 1310nm

SFP 10 Gigabit Fiber Module

Supercharge your network speeds with our SFP 10 Gigabit Fiber Module 10GBase-LRM, LC Multimode. Effective up to 220m and designed for high-speed data rates

OSX010000, Huawei SFP+ Optical Transceiver, 10G

Huawei OSX010000 10G SFP+ optical transceiver, 1310nm, 10km SMF, ideal for Huawei switches and routers. Check specs, compatibility and online price. Global

SFP-10G-LR, Huawei SFP+ Optical Transceiver, 10G,



Huawei SFP-10G-LR 10G SFP+ 1310nm 10km single-mode LC module for enterprise and carrier networks. Check real-time Huawei 10G SFP module price online.

Huawei® SFP-GE-LX-SM1310 Compatible 1000base-LX

This is a Small Form-factor Pluggable (SFP) transceiver module with maximum data transfer rate of 1.25 Gbps up to 10km over singlemode fiber cable. It is used in

Huawei SFP-10G-LR Compatible 10Gb SFP

Huawei SFP-10G-LR Compatible 10G SFP+ Module - Single-mode 1310nm Wavelength for up to 10km with Standard Compatability This high-quality Huawei



Huawei SFP-10G-GE-LX Compatible 10Gb SFP

Huawei SFP-10G-GE-LX Compatible 10G SFP+ Module - Single-mode 1310nm Wavelength for up to 10km with Standard Compatability This high-quality Huawei

SFP+10GE-LH10-SM1310

SFP+10GE-LH10-SM1310(02311MUU)compatibletransceiverusetopqualityDFBLaser transmitter operating at nominal wavelength 1310 nm. and 1310 nm. PIN Photodiode receiver. It support

Huawei SFP-GE-LX-SM1310 Compatible 1.25Gbps SFP 1000BASE-LX 1310nm

Huawei SFP-GE-LX-SM1310 compatible optical transceiver is a dual fiber 1000Mbps



Small Form-factor Pluggable SFP module for use in 1000BASE Ethernet network. SFPLX provides 1Gb/s throughput

10G 1310nm 10km SM SFP+ Huawei Brand New Optical Transceiver

10G 1310nm 10km SM SFP+ Huawei Brand New Optical Transceiver The 10G 1310nm 10km SMSFP+ Huawei optical transceiver is a high-performance, cost-effective solution for 10 Gigabit Ethernet

SFP-10G-LR-1310nm 20km LC DDM Optical Transceiver

XFP (10GB Small Form-factor Pluggable) optical module: "X" is the abbreviation of Roman numerals 10, all XFP modules are 10G optical module. The XFP optical



Huawei SFP-10G-ER-1310-HU SFP+ 10GBASE-ER Singlemode

Der SFP-10G-ER-1310-HU 10GBASE-ER LC Duplex SFP+ kompatibel zu Huawei hat eine Empfangsfunktion (Receiver mit 1310nm) und eine Sendefunktion (Transmitter mit 1310nm) für

10 Gbit/s SFP+ Optical Modules

10 Gbit/s SFP+ optical modules apply to 10 GE optical ports. The wavelength can be 850 nm, 1310 nm, or 1550 nm, and the transmission distance ranges from 0.5 km (0.31 mi) to 80 km (49.71 mi).

10GE SFP+ Optical Modules



If the SFP-10G-ER-1310 is connected to a 10Gbase-ER standard optical module (1550nm, 10GE, 40km), the maximum transmission distance is only 20km due to different specifications such as wavelength

Huawei S5731-S48P4X 48x GE PoE+ 4x 10G SFP

Huawei S5731-S48P4X CloudEngine switch with 48x GE PoE+ and 4x 10G SFP+ uplinks for campus and enterprise access. View key features and specifications now.

10G 1310nm 10km SM SFP+ Huawei Brand New Optical Transceiver

Engineered for long-distance data transmission up to 10 kilometers, this hot-pluggable SFP+ module operates at a 1310nm wavelength, making it ideal for enterprise networks, metropolitan area



Huawei SFP-10G-LR Datasheet Overview

Overview Huawei SFP-10G-LR Compatible 10G SFP+ Module - Single-mode 1310nm Wavelength for up to 10km with Standard Compatibility. This high-quality Huawei SFP-10G-LR Compatible 10GBASE

Huawei SFP-10G-LR 02310QDJ Optical

NewsHuaweiSFP-10G-LR02310QDJOpticalTransceiver,SFP+,10G,Single-modeModule (1310nm,10km,LC) The Huawei SFP 10G LR 02310QDJ Optical Transceiver is a high performance,

Cisco SFP-10G-LR-S 10GBASE-LR SMF 1310nm SFP

Cisco SFP-10G-LR-S 10GBASE-LR SFP+ module for 10G over single-mode fiber at



1310nm. Optimize Cisco switch uplinks and long-reach links. Global Shipping &

Sfp Modules

Discover 20km Optical Fiber Transceiver SFP modules with 1.25G/1310nm compatibility for Cisco/Mikrotik. Single mode, DDM function, and wide temperature range for optimal performance. ,

Haile SFP-GE40-SM1310-A 1.25G Gigabit Single Fiber Optical Module

Product Overview The Haile SFP-GE40-SM1310-A is a high-performance Gigabit single-mode single fiber optical module designed for reliable long-distance data transmission. Operating at 1.25Gbps,



Huawei SFP-GE-LX-SM1310-A Single Mode Fiber Transceiver

Professional Huawei SFP module with 1.25Gbps data rate, 1310nm wavelength & 10km range. 100% H3C compatible with lifetime warranty.

Contact Us

For datasheets, pricing, or custom optical networking solutions, please visit:
<https://entrenamientointeligente.es>