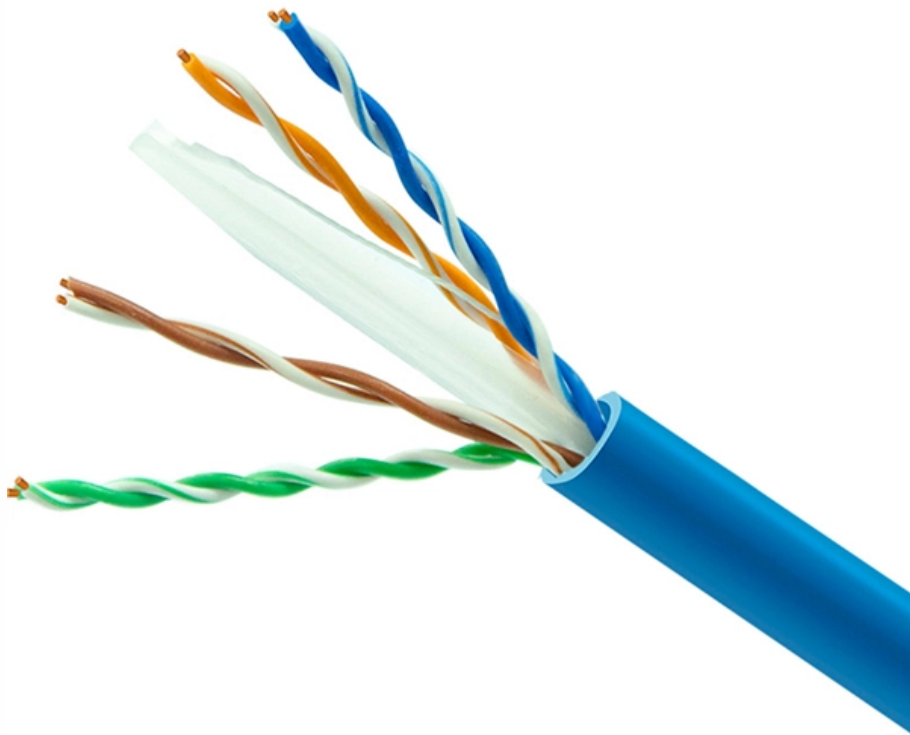


# **How long should a cable tray be before adding an expansion joint**





## Overview

---

Steel trays >30 m straight run require expansion joints; aluminium >15 m. As cables and trays expand or contract, they can cause stress on the structure, leading to potential damage or misalignment. The cable trays must not be clamped to each support so firmly that the cable tray cannot expand without distortion. maintain spacing or to keep cables in place when the tray is ect the minimum bend ra-dius for cables as they exit the bottom of the cable tray. A rung spacing of 6 to 9 inches (150 to 230 mm) is preferable when the cable tray cont d for instrumentation and control applications that require. The mechanical and electrical characteristics, tests, certifications, overall quality management, recommendations mentioned in this technical guide only apply to our own cable management ranges and cannot under any circumstances be transposed to si osure, overheating or.



## How long should a cable tray be before adding an expansion joint

---

## Cable Tray Thermal Expansion Guidelines , PDF

---

2) Factors like material, temperature range, and installation temperature determine the required gap size and spacing of expansion joints. For a 100°F temperature

## U.S. News: Latest Breaking Stories and Video on

---

Get the latest news headlines and top stories from NBCNews . Find videos and news articles on the latest stories in the US.

## Cable tray expansion joint setting method

---



Reasonable setting of cable tray expansion joints is a key link to ensure the safe operation of the cable tray system, and factors such as thermal expansion compensation, vibration absorption

## **T.D.S.**

---

Step 2: Determine the gap setting between the cable tray expansion splice joints at the time of the installation to account properly the movement due to thermal expansion/contraction (See Figure 65

## **Cable Tray Expansion Joint Installation: Comprehensive**

---

Expansion joints must be installed at regular intervals along the cable tray system, especially in areas where significant temperature changes occur.



## Thermal Expansion of Cable Tray

---

A cable tray system may be affected by thermal expansion and contraction, which must be taken into account during installation. To determine the number of expansion splice plates you

## Cable tray (expansion joints) , Information by Electrical Professionals

---

NEMA has a free PDF installation guide that gives you the information needed to calculate how many expansion joints are needed. The code never tells you that you need one every so many

## Fiberglass Cable Tray Thermal Expansion Data

---



It is important that thermal contraction and expansion be considered when installing cable tray systems. The length of the straight cable tray runs and the temperature

## **Fiberglass Cable Tray Thermal Expansion Data**

---

Technical data on fiberglass cable tray thermal expansion, contraction, installation, and gap settings. Includes tables and diagrams.

## **Microsoft Word**

---

There are expansion joint splice plates and bonding jumpers available from cable tray manufacturers. A cable tray support should be located within 2 feet of each side of the expansion joint splice plates



## **GUIDE CABLE TRAYS TECHNICAL**

---

Depending on the maintenance operations to be carried out, partial or total power cuts of the enclosure concerned should be planned before any work. When performing operations that involve access to

### **Cable Tray Technical Guide A practical guide to product selection and**

---

The choice of method should be discussed with a local inspector. The best decision may be to extend only the cables, creating a discontinuity in the cable tray.

### **Managing Thermal Expansion and Contraction in Cable**

---

Learn how to manage thermal expansion and contraction in cable tray systems with expert tips on expansion joints, guides, and spacing to ensure



## Expansion Splice Plates. Legrand Cable Tray

---

Supports should be located within 600 mm (2 ft) of each side of the expansion splice plates. Expansion splice joints should be designed and placed so as to maximize the rigidity of the cable tray, unless

## Cable tray (expansion joints) , Information by Electrical Professionals

---

Is there anywhere else in the NEC book that says cable tray has to have an expansion splice plate every so many feet? Alls I have found is 392.44 which says- Expansion splice plates for



## What is Expansion Joint Cable Tray Installation

---

Learn the essentials of expansion joint cable tray installation and how they ensure safe and durable cable tray systems in various environments.

### CTI-S65001\_A01

---

Thermal Expansion and Contraction of Cable Tray All materials expand and contract due to temperature changes. It is important that cable tray installations incorporate features which provide adequate

## Cable Tray Technical Guide A practical guide to product selection and

---

A practical guide to product selection and installation This guide for engineers and installers has been developed by ABB as a practical reference regarding cable tray characteristics, installation, and



## Thermal Contraction and Expansion of Cable Tray

---

There are expansion joint splice plates and bonding jumpers available from cable tray manufacturers. A cable tray support should be located within 2 feet of each side of the expansion joint splice plates

## Thermal Expansion & Contraction of Steel Cable Trays

---

Expansion Joint Spacing - Engineering Basis. A typical cable-tray expansion joint can accommodate 20 mm of movement (safety factor included).  $L_{max} = \text{Joint capacity} / \text{Expansion per}$



# Cable Tray Installation Guidelines for Engineers

---

Cable trays shall be grounded at least every 15 m (50 ft) and at both ends for Cable Tray Installation Guidelines for Engineers. All cable tray conduit drop-outs shall be bonded to the cable tray according

## 392.44 Expansion Splice Plates.

---

A bonding jumper is required where cable tray systems are mechanically discontinuous.  
Code Change Summary: New code section with requirements for

## Master Cable Tray Installation: A Professional Step-by

---

Learn how to install cable trays for large-scale projects with our professional, step-by-step guide covering industry standards, safety protocols,



## Thermal Contraction and Expansion of Cable Tray

---

For a 100° F differential (winter to summer), a steel cable tray will require an expansion joint every 128 feet and an aluminum cable tray every 65 feet. The temperature at the time of installation will dictate

## Thermal Expansion & Contraction of Steel Cable Trays

---

1. Introduction Steel cable trays, like all metallic structures, undergo dimensional changes when subjected to ambient temperature variations. In outdoor environments or areas with significant

## The impact of cable tray thermal expansion and

All materials expand and contract due to temperature changes, including cable tray systems. Understanding where and how often to allow for

## **Cable tray expansion joint setting method**

---

When crossing building expansion joints and settlement joints, the expansion joints should be set within 500mm on both sides of the joints, and the compensation amount must be  $\geq$  the joint

### **Contact Us**

---

For datasheets, pricing, or custom optical networking solutions, please visit:  
<https://entrenamientointeligente.es>