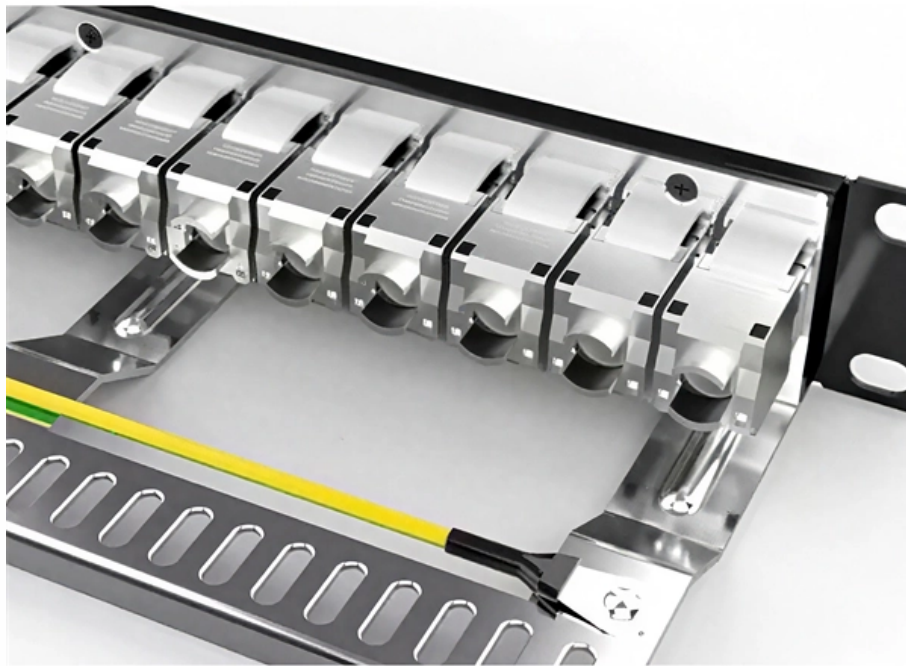


# **High-density modular data center anti-electro-marking stock available now**





**High-density modular data center anti-electro-marking stock available**

---

## **The Next Step in Prefabrication: Hybrid Design in Hyperscale Data Centers**

---

The increased popularity of modular data center design is not surprising. Consider: by moving construction and integration of site, those tasks can be performed under tightly controlled factory

## **Custom Modular Data Centers for Edge & AI , ModulEdge**

---

Our high-density configurations start at 40 kW per rack and go up to 150 kW with direct-to-chip liquid cooling. We support NVIDIA B200, GB200, H200, H100 and AMD GPU servers.



## **Next Generation High Power Density Data Center**

---

This next generation High Power Density data center utilizes the Vertiv™ Liebert® DCL or active Vertiv™ Liebert® DCD cooling solutions to support rack density up to 50 kW/rack. SmartMod™

## **Solving AI's growing pains at the edge with modular data**

---

As hungry AI applications grow at the edge, modular data centers are coming to the rescue to provide high-density compute power.

## **Modular Data Centers / POD Supplier for AI & HPC**

---



Our Projects Scalable, Turnkey Data Centers for Next-Gen Workloads Edge Modular delivers modular data centers engineered for AI-ready infrastructure and high

## Top 10: Modular Data Centre Companies

---

Here we highlight the top 10 companies leading the modular data centre revolution, ranked by market leadership, innovation, global scale and

## Data center front modules High Density: Maximum port

---

Contact us to jointly develop the optimum data center front module high-density solution for your data center and benefit from maximum port density



## **Prefabricated modular solutions**

---

Designed for high-density applications, our UPS systems offer unmatched load protection, integration with different energy sources and maximised total cost of ownership.

## **Pre-engineered Modular Data Center Solutions 500 1500 kW IEC**

---

ABB's modular, prewired, and pretested solutions provide for a fast and smooth startup with minimal site and civil works, thereby reducing risk and enabling speed to deployment.

## **Prefabricated modular solutions**

---

However, in contrast, modern modular data centers are conceived, produced, and tested off-site concurrently with site preparation, yielding over 40% time savings



## **Vertiv launches high density prefabricated modular data**

---

Vertiv has launched a high-density modular data center offering for artificial intelligence (AI). Dubbed the MegaMod CoolChip, the company said the

## **Intel IT: Extremely Energy-Efficient, High-Density Data Centers**

---

Executive Overview As part of our effort to strategically transform data centers to achieve significant business results, Intel IT used design best practices to convert two vacant silicon-wafer-fabrication



## **Vertiv Launches High-Density Prefabricated Modular**

---

According to the latest research by Omdia, demand for prefabricated modular and micro data center solutions has been accelerated by AI, with Vertiv

## **Huawei AI Data Center Reference Design**

---

This solution integrates power supply and distribution units, UPSs, lithium batteries, air conditioners, and fire extinguishing systems into a ultra-high protection 40-foot container.

## **A Receiver-Driven Transport Protocol With High Link Utilization Using**

---

We present an Anti-ECN (Explicit Congestion Notification) Marking Receiver-driven Transport protocol called AMRT, which achieves both near-zero queueing delay and full



link utilization by reasonably

## **MDC Presentation MB**

---

Designing electrical systems for prefabricated modular data centers presents several unique challenges due to their modular, pre-assembled nature and the need for scalability, efficiency, and reliability.

## **High-Density AI Data Centers**

---

Through modular design, robust operational protocols, and advanced power management strategies, data centers can confidently scale high-density AI deployments while maintaining the reliability and



## Huawei IDS2000 Modular Data Center Solution

---

IDS2000L series modular data center high density solution, is adopting cold aisle / hot aisle containment, efficient modular UPS and row level precision air conditioner, as well as no need raised

## High-Density AI Data Centers

---

The rapid evolution of artificial intelligence (AI) and high-performance computing (HPC) workloads is placing extraordinary new demands on data center infrastructure worldwide. As organizations adopt

## AMRT: Anti-ECN Marking to Improve Utilization of Receiver-driven

---

ABSTRACT Cloud applications generate a variety of workloads ranging from delay-sensitive flows to bandwidth-hungry ones in data centers. Existing reactive or proactive congestion control protocols



## Schneider Electric Launches New Data Center Solutions

---

The Prefabricated Modular EcoStruxure Pod Data Center is now shipping pre-designed and pre-assembled with all components for rapid

## What are High-Density Data Centers & Colocation?

---

Understanding data center core concepts Before diving into the specifics of high-density data centers, it's important to understand the basic building blocks of any

## The Evolution of High-Density Power in the Data

Artificial intelligence (AI) is reshaping the data centre landscape faster than any technology in history. As organizations race to harness the potential of

## **Vertiv launches high-density prefabricated modular data center**

---

With demand for AI-ready data centre capacity outstripping supply, developers and operators are focused on bringing new capacity online as quickly as possible.

## **Top 10: Modular Data Centre Companies**

---

Which companies are leading the field for modular data centres? Discover the top 10 companies driving the future of modular data centres with



## **A Receiver-Driven Transport Protocol With High Link Utilization Using**

---

Existing reactive or proactive congestion control protocols are hard to simultaneously achieve ultra-low latency and high link utilization across all workloads ranging from delay-sensitive

## **Vertiv launches high-density prefabricated modular data center**

---

The solution is available globally and can be used as a modular retrofit of an existing facility or as a new freestanding data center, supporting up to hundreds of kilowatts per row, up to

### **Contact Us**

---

For datasheets, pricing, or custom optical networking solutions, please visit:  
<https://entrenamientointeligente.es>