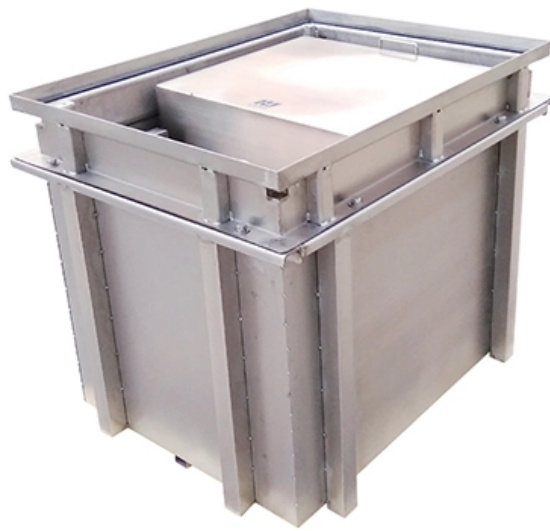


# **Function of the grounding air switch in the distribution box**





## Overview

---

Incoming Compartment - When located in the incoming compartment, the ground switch connects the load-side terminals of the air-disconnect switch (or incoming cables) to ground. This switch location ensures the entire capacitor bank remains grounded and cannot inadvertently. An earthing switch, also referred to as a grounding switch, is a protective mechanical switching device integrated into switchgear components such as circuit breakers and isolators. This article explains what a distribution box does, typical configurations, sizing guidelines, installation. 26 mm<sup>2</sup> (10 AWG) ground wire must be used, and in all other markets a 6 mm<sup>2</sup> must be used.



## Function of the grounding air switch in the distribution box

---

# Distribution Box: Types and Functions , Axis-Electricals

---

A distribution box ensures that electrical supply is distributed in the building, also known as a distribution board, panel board, breaker panel, or electric panel.

## What Is an Air Switch?

---

Understanding the Basics of Air Switches Air switches are fundamental components in electrical power distribution systems. They provide a critical safety function by allowing operators to



## What Is Air Switch and How It Works

---

Air switch, I think everyone has heard of it. Each of our families has a distribution box, and the switches in the distribution box are air switches, whether

## Understanding Distribution Boxes: Your Guide to Power

---

Understanding distribution boxes: Your guide to power distribution. Learn about power distribution box functions and shop power distribution options.

## Ten equipment you MUST recognize in every

---

The following equipment are installed in distribution substations: Distribution Transformer Circuit breaker Lightning Arrester Air Break (AB)



## **Gang operated (GO)switch: types, working principle and parameters.**

---

It is working on two no poles in the air so its other name is GOAB switch. It is operated manually in mechanical function by handle after disconnecting the load. The handle is installed on a pole

## **Purpose of Grounding the Utility Power Distribution**

---

The article discusses the importance and purpose of grounding in utility power transmission and distribution systems, focusing on how grounding

## **Air Break Switch: A Comprehensive Guide to Types and Applications**

---



An air break switch, often referred to as an air break switchgear, is instrumental in electrical distribution networks. It provides essential switching and isolation functions to ensure safety

## **Electrical Earthing Switches Explained**

---

Earthing switches (ground disconnectors) are used to make the corresponding parts of the electrical circuit (and the equipment connected to it) safe to access and

## **What Is a Grounding Switch? A Guide for Safe Power**

---

When activated, the switch physically connects live conductors to the ground. This action is usually performed by rotating or sliding a mechanical arm



## Size determination, installation method and wiring mode

---

When the switches are arranged in two rows, the wiring route of the switches shall be considered. Of course, there is no final conclusion on the size of the electric box.

## Per diem rates

---

Per diem rates We establish the per diem rates that federal agencies use to reimburse their employees for lodging and meals and incidental expenses incurred while on official travel within

## What is Earthing Switch? Complete Guide of Earthing

---



Learn about earthing switches, an essential protective devices in electrical power distribution systems and switchgear. This guide explains earth switch's function,

## Isolator Vs A B Switch

---

11kv 400 Amp A B Switch Balaji Make What is off load Isolator Disconnecter ? Off-Load Isolator Disconnecter, also known as a disconnecter switch, is an essential

## The Basics of Substation Grounding: Parts of the

---

The Grounding Network The grounding network contains the conductors responsible for offering a low impedance path between the equipment



## Single Phase Distribution Box Definition and Main Parts

---

A single phase distribution box controls and protects home or office circuits. Learn its definition, main parts, and how it ensures electrical safety.

### DISTRIBUTION BOX

---

Each DISTRIBUTION BOX and controller must be grounded. On the US market, a 5.26 mm<sup>2</sup> (10 AWG) ground wire must be used, and in all other markets a 6 mm<sup>2</sup> must be used.

### What is an Earthing Switch - An Ultimate FAQ Guide

---

A High-Speed Earthing Switch (HSGS) is specially designed to rapidly ground circuits during fault conditions. Often installed in GIS systems or on transmission



## **Air Conditioning Distribution Box: Essential Guide to Function, Types**

---

The primary function of an air conditioning distribution box is to receive incoming electrical power and distribute it to the air conditioner's control circuits, compressors, motors, and

## **Air Break Switch**

---

In this article, we will discuss a type of switchgear called an air break switch, its types, and applications in the electrical industry. Let us start with the

## **What is grounding switch / earthing switch? A detailed introductory**

---



The primary function of an earthing switch is to ground a portion of the busbar when abnormal conditions, such as short circuits, occur. It remains inactive during normal circuit operation but is

## **Air Break Switches: Applications and Benefits**

---

Applications of air break switches  
Circuit Isolation: Air break switches are used in power distribution systems to isolate specific sections of the network

## **DISTRIBUTION BOX**

---

If two or more spindles are used, and grounded together at the spindle side, the tool cable ground resistance is connected in parallel. In that case the resistance will be reduced to a safe



## **A Practical Guide to the Operation of Ring Main Units**

---

The ring main switch enables the underground cable system to be isolated in sections, and the interconnection of adjacent feeders. On the other

## **What is an Air Break Switch? Purpose, Working & Benefits**

---

Many gang operated air break switches come with a mechanically interlocked earthing blade, used to safely ground de-energized lines during

## **Correct Connection Method Of Grounding Wire Of**

---



Open the distribution box and find the position marked with the grounding plate or PE letter. This position is the connection point of the grounding

## **Understanding Electrical Air Break Switches - Astryd**

---

Conclusion Electrical air break switches are indispensable in modern power systems, providing essential functions for isolating and protecting electrical

### **Contact Us**

---

For datasheets, pricing, or custom optical networking solutions, please visit:  
<https://entrenamientointeligente.es>