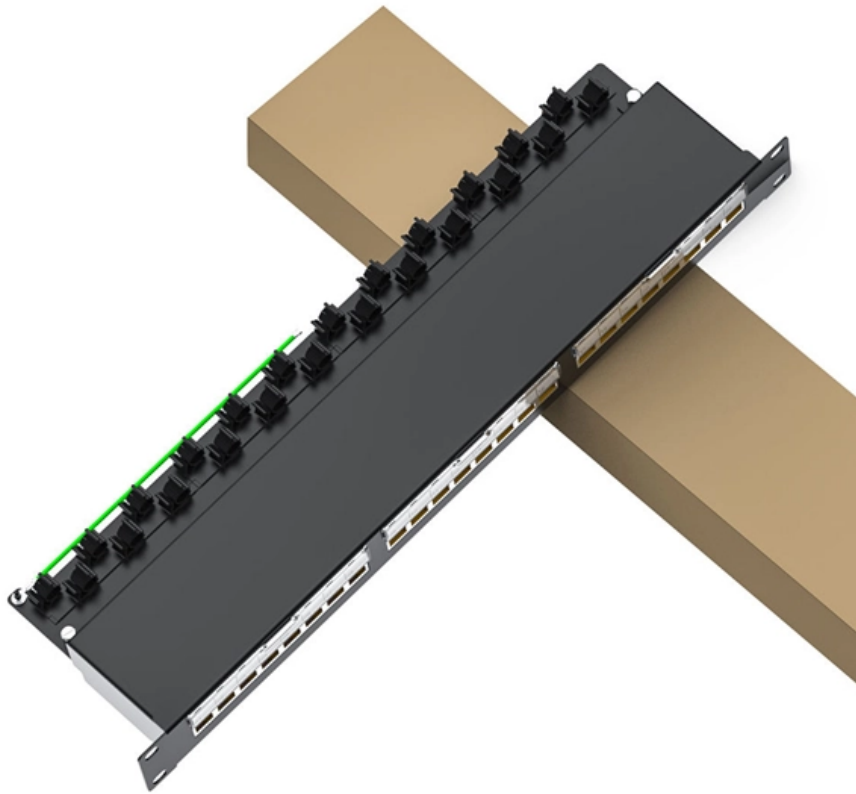


# Can the SG1008 be used as a core switch





## Can the SG1008 be used as a core switch

---

# TP-Link TL-SG1008D Desktop Gigabit Switch, 8x RJ-45 Manual

---

Download the TP-Link TL-SG1008D Desktop Gigabit Switch, 8x RJ-45 manual (PDF). Get setup steps, LED indicators, VLAN/ QoS tips, troubleshooting, specs, and safety guidelines for fast, reliable

## User manual TP-Link TL-SG1008D (English)

---

How can I monitor and manage the TP-Link TL-SG1008D switch remotely? To remotely manage the switch, you can enable the Remote Management feature



## 8-Port Gigabit Desktop/Rackmount Switch

---

Moreover, with innovative energy-efficient technology, TL-SG1008 can save the power consumption, making it an eco-friendly solution for your home or office network.

## Installation Guide

---

Each port can be used as general port or Uplink port, and any port can be simply plugged into a server, a hub, a router or a switch, using the straight cable or crossover cable. Diagnostic LEDs which

## TP-Link TL-SG1008D user manual (English)

---

User manual Access the manual for the TP-Link TL-SG1008D here, completely free of charge. This manual belongs to the switches category and has been rated by 4 users with an average score of



## **TP-LINK TL-SG1008D Review**

---

The TP-LINK TL-SG1008D is an inexpensive unmanaged 8-port gigabit Ethernet switch. It focuses on lowering costs, and for \$28, achieves those goals.

## **TP-LINK TL-SG1008 SWITCH INSTALLATION MANUAL , ManualsLib**

---

Once the device you connect to the switch is identified, the switch will supply power through the PoE port, and then you can use it as a 10/100/1000Mbps Auto-Negotiation RJ45 Ethernet port.

## **TP-LINK TL-SG1008 USER MANUAL Pdf Download**

---



View and Download TP-Link TL-SG1008 user manual online. 8/16/24-port Gigabit Ethernet Switch. TL-SG1008 switch pdf manual download. Also for: Tl-sg1016, Tl

## **TP-LINK TL-SG1008D**

---

TP-LINK TL-SG1008D - Switch empowers seamless network connection, transforming your network to a speedy 1000Mbps connection. Its non-blocking switching architecture speeds up traffic between

## **TP-LINK TL-SG1008 USER MANUAL Pdf Download**

---

Each port can be used 8/16/24-port Gigabit Ethernet Switch for assistance. Make sure not to place anything too heavy on top of the switch.



## **TP-Link TL-SG1008**

---

TP-LINK TL-SG1008 is a high performance Smart Gigabit switch that provides an ideal solution for workgroup or department Gigabit applications. With 8 10/100/1000BASE-T Gigabit Ethernet ports

## **TL-SG1008(UN) 8**

---

Featuring non-blocking switching architecture, TL-SG1008 forwards and filters packets at full wire-speed for maximum throughput. With 16KB Jumbo frame, the performance of large file transfers is improved

## **TP-LINK TL-SG1008D USER MANUAL Pdf Download**

---

View and Download TP-Link TL-SG1008D user manual online. 5/8-Port Gigabit Ethernet Switch. TL-SG1008D switch pdf manual download. Also for: TL-SG1005D,



## **TL-SG1008 SG-1016D SG1024D2**

---

Description: The TL-SG1005D/TL-SG1008D Gigabit Desktop Switch provides you with a high-performance, low-cost, easy-to-use, seamless and standard upgrade to improve old network to

## **TP-Link TL-SG1008**

---

The TL-SG1008 is a high performance Smart Gigabit switch that provides an ideal solution for workgroup or department Gigabit applications. With 8 10/100/1000Base-T Gigabit Ethernet ports with

## **TL-SG1008(UN) 8.0**

---



Gigabit Switch Featured 10/100/1000Mbps ports, TL-SG1008 greatly expands your network capacity, enabling instant large file transferring. So, power users in the home, office, workgroup, or creative

## **TL-SG1005D& TL-SG1008D\_datasheet**

---

Overview The TL-SG1005D/TL-SG1008D Gigabit Desktop Switches provide you an easy way to upgrade your network to 1000Mbps network. Since all ports supports auto MDI/MDIX, there's no

## **TL-SG1008 , 8-Port Gigabit Desktop/Rackmount Switch**

---

What This Product Does The TL-SG1008 8-Port Gigabit desktop/rack-mount switch provides an easy way to make the transition to Gigabit Ethernet. All 8 ports



## **TP-Link 8-Port Gigabit Desktop/Rackmount Network Switch**

---

All 8 ports support auto MDI/MDIX, no need to worry about the cable type, simply plug and play. Moreover, with the innovative energy-efficient technology, the TL-SG1008 can save the power

### **User Guide**

---

Each port can be used as general ports or Uplink ports, and any port can be simply plugged into a server, a hub, a router, a switch or a PC, using the straight cable or crossover cable. Diagnostic

## **TP-LINK TL-SG1008D USER MANUAL Pdf Download**

---



View and Download TP-Link TL-SG1008D user manual online. 8-port Gigabit Desktop Switch. TL-SG1008D switch pdf manual download.

## **TP-Link TL-SG1008D 8-Port Gigabit Desktop Switch**

---

With computer systems sporting Gigabit LAN Port being a norm these days, a Gigabit switch makes it all the better by allowing your computers to communicate

## **TL-SG1005D& TL-SG1008D\_datasheet**

---

Overview The TL-SG1005D/TL-SG1008D Gigabit Desktop Switches provide you an easy way to upgrade your network to 1000Mbps network. Since all ports supports auto MDI/MDIX, there's no



## **TL-SG1008D (UN)6.0**

---

Description: The TL-SG1008D Gigabit Desktop Switch provides you an easy way to upgrade your network to 1000Mbps network. Since all ports supports auto MDI/MDIX, there's no need to worry

## **TP-LINK TL-SG1008 User Guide**

---

Read, download, or get answers to your questions about TP-LINK TL-SG1008 8-Port Gigabit Ethernet Switch. This comprehensive user's guide covers setup, features, and troubleshooting.

## **TL-SG1008 7.0**

---

OverviewThe TL-SG1008 Gigabit Ethernet Switch provides you with a high-performance, low-cost, easy-to-use, seamless and standard upgrade to improve old network to 1000Mbps network. All 8



## Contact Us

---

For datasheets, pricing, or custom optical networking solutions, please visit:  
<https://entrenamientointeligente.es>