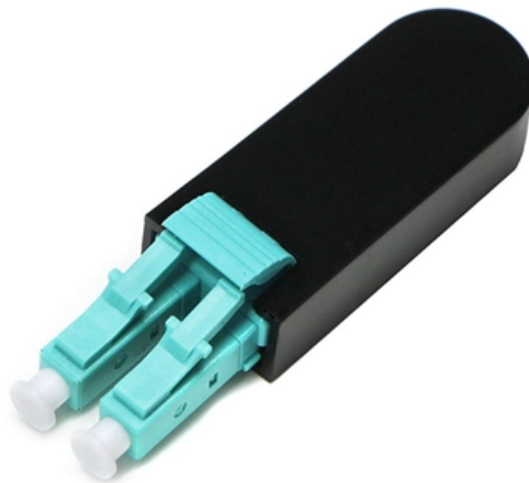


# **Cable-type support arm**





## Cable-type support arm

---

## Support arm systems

---

Reliable cable protection in all applications. The support arm configurator is the perfect planning tool for fast, safe design of a support arm system to suit your

## Support Arm Systems , Armendus Support Arm

---

Operator Support Arm Systems are today's most needed and valuable products in the industry sector that provide the operator an easier and smoother accessibility.

## Heavy Duty Cable Tray Cantilever Support Arm



## 410mm

---

Professional-grade welded cantilever support arm designed specifically for cable tray installations. Features a flat mounting plate and hot-dip galvanized finish for

## Cable Support Arm With Return Spring , nVent SCHROFF

---

Cable support arm allows pull-out devices and chassis to act as cable management tools. The cables would be bundled together using cable ties.

## V-Type Crossarms , Crossarm Braces , Hubbell Power Systems

---

V-type crossarm braces are designed to provide support in line construction. These braces are essential for securely supporting insulators, service voltage wires, conductors, static wires, and down lead



## Support Arm Systems

---

Choose from 11 distinct systems based on aluminium profiles or steel/stainless steel tubes, with load capacities from 0-200 kg and boom lengths up to 3 m. Profiles

## Technical System Catalogue Support arm systems

---

Based on important user-specific parameters such as jib length, housing weight or the cable cross-sections required, the tool identifies the perfect system for your application.

## RackSolutions 1U-2U Server Rack Cable Management Arm

---



The cable management arm is compatible with most types of equipment. It is a fully adjustable, ruggedized solution. There are a number of ways to attach the cable

## The Complete Guide to Armoured Cables

---

The Role of Armoured Cables in Modern Installations Armoured cables are the backbone of resilient electrical networks. Designed for enhanced mechanical strength and environmental resistance, they

## Support Arm Systems

---

ROSE offers a wide range of support arm systems in aluminium, steel and stainless steel, which can be individually tailored to your requirements.



## Overhead Line Connector

---

Overhead line connector links or combines electrical conductor or ADSS / OPGW cable segments to create power transmission systems. Our hot-dip galvanized

## CABLE TRAY SYSTEM

---

CABLE TRAY SYSTEM Tray Cantilever Arm Vantrunk Tray Cantilever Arms (TCA) are suitable for supporting cable tray from channel or flat surfaces. Available for cable tray of widths from 50mm to

## Support arm with cable integration

---

Find your support arm with cable integration easily amongst the 28 products from the leading brands (LUMI, Oasys, MZ Liberec, a.s., ) on MedicalExpo, the medical



## **Technical System Catalogue Support arm systems**

---

or standing position - with the support arm systems from Rittal, the interaction between observing and controlling has never been better.

## **Rittal Support Arm Systems Brochure**

---

Support arm configurator for CP 40/60/120/180 The tool is able to precisely define the correct support arm system using important user-specific parameters such as the jib length, enclosure weight or

## **Multi-Mount Cable Support Arm , Underground Devices**

---



The Multi-Mount Cable Support Arm is the complete nonmetallic cable support system. It bolts directly to the vault or manhole wall, making it ideal for new

## **Cable Trays Cantilevers & Central Suspension Brackets**

---

Explore cantilevers and central suspension brackets for cable support systems, designed for durability and versatility in various environments. Discover Wibe Group's quality solutions.

## **Strut cantilever arms , Eurostrut brackets for wall mounting**

---

Strut cantilever arms. For stable wall mounting of cable ladders, trays and pipes. Request a quote easily via our webshop.



## Support Arms Systems , Darshana

---

Enhance the functionality and ergonomics of your workstations with Support Arm Systems from Darshana. Designed for strength, flexibility, and ease of use, our

### Support arms

---

The multivariable arm-port support arm is shipped fully assembled in two standard lengths (250 mm + 325 mm) or double arm (250 mm + 250 mm, 325 mm + 325 mm) with selected adapters (wall and

## Support Arm Systems , Armendus Support Arm

---

Armendus with its professional team and years of expertises, successfully designed a



variety of modern looking support arm systems with highly advanced structures

## Cable Management Support Systems

---

Cable Management Support Systems Cable Support Systems are well designed to provide necessary support for cable trays, cable ladders and trunkings. Cable

### Contact Us

---

For datasheets, pricing, or custom optical networking solutions, please visit:  
<https://entrenamientointeligente.es>